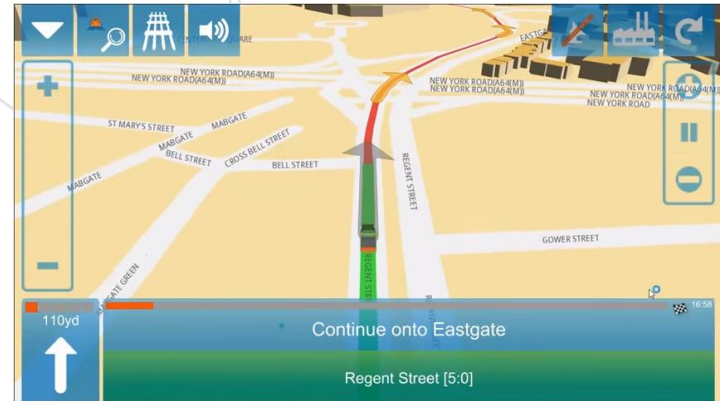


A minimalist line-art map of Europe, showing the outlines of countries and major geographical features. The word "SVEVIA" is overlaid in the center in a bold, red, sans-serif font. The map is rendered in thin grey lines on a white background.

SVEVIA

Agenda:

- Last seasons trial
 - What was good and what needs to be fix
- Development RouteSmart
 - Start and stop positions
 - Other problems
 - Scripts
- NVDB vs HERE (Navteq)
 - Only manually methods to combine these data
 - NVDB is missing turn restrictions
 - HERE is missing maintenance information
 - Is it easy to copy fields and information to new data when update of HERE?
- Fusion and Integrated Skills
 - More functions in Fusion
 - Software lagging
 - Be able to test Data Packages before they uploads into Fusion?
 - Installation of software not so easy
- Next season
 - Same areas



Last season 2015-2016

Driver opinions

- **See potential**

Svevia opinions

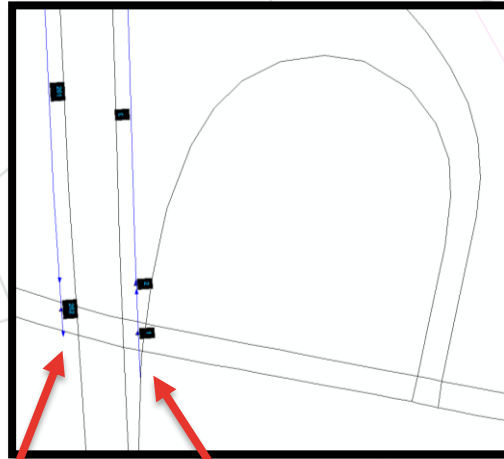
- **Most useful in bigger cities**

Expectations

- **Better data**
- **More stable**
- **More functions fusion**

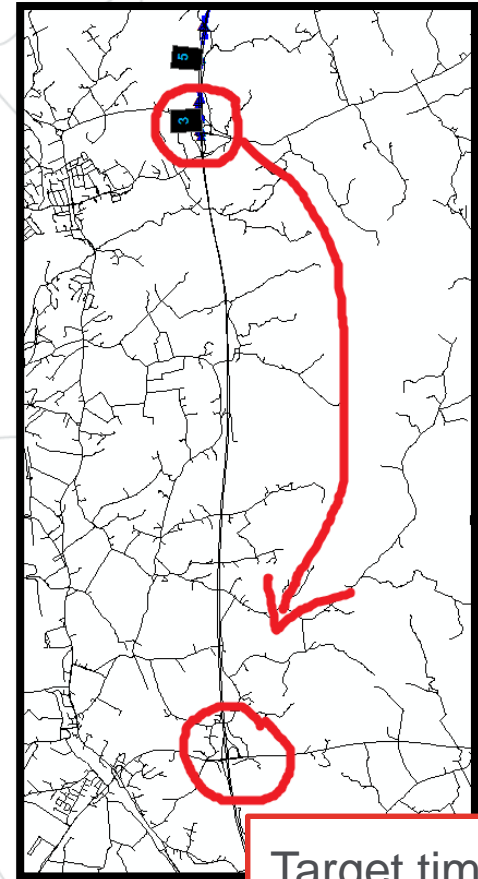
Start/Stop positions

Target time: 2h
Route: 1h 59min



Stop

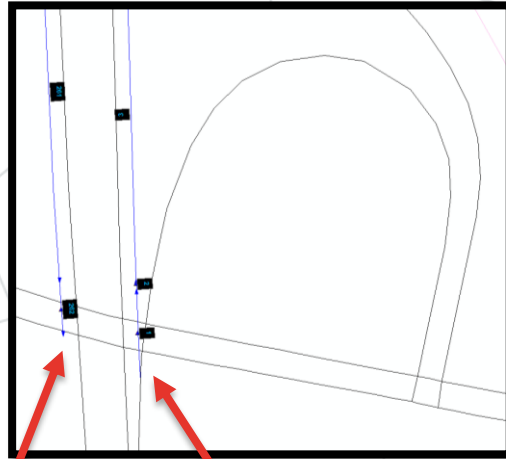
Start



Target time: 2h
Route: **2h 9min**

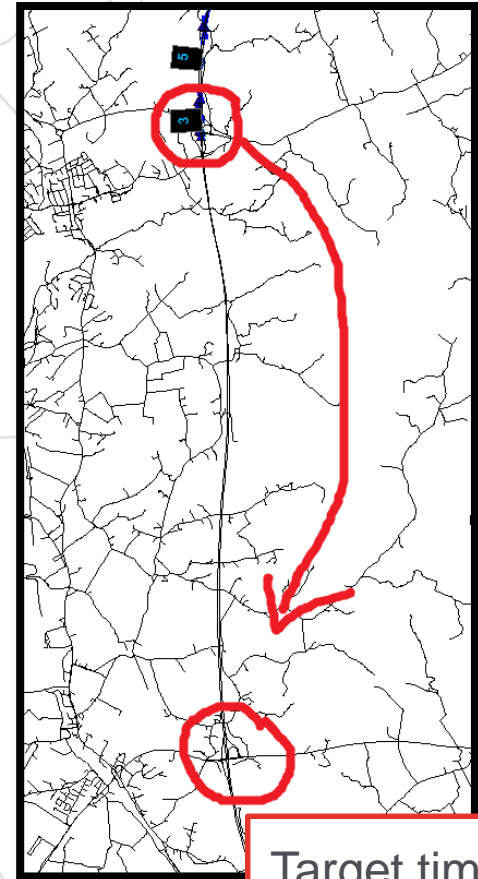
- Routes not optimized
- We have strict times to follow
- If 10 minutes are missing on each route we might need one more vehicle
- RS quickfix (Tom Huppmann) is to use Facilities, but we want RS to optimize best connected loops. Those continues routes have no specified start/stop.

Target time: 2h
Route: 1h 59min



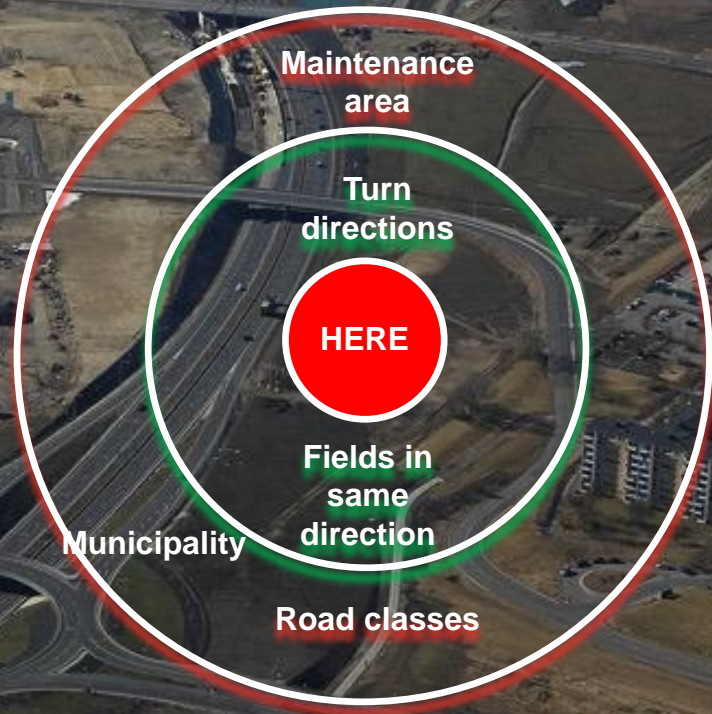
Stop

Start



Target time: 2h
Route: 2h 9min

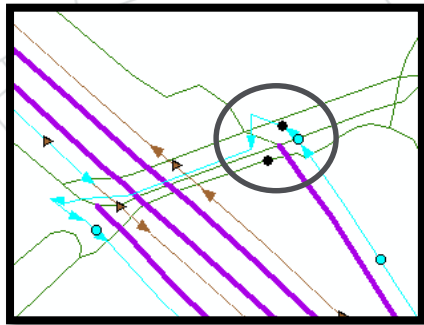
Combine?





Even if we succeed with a combination

- None of the data has "refuger"



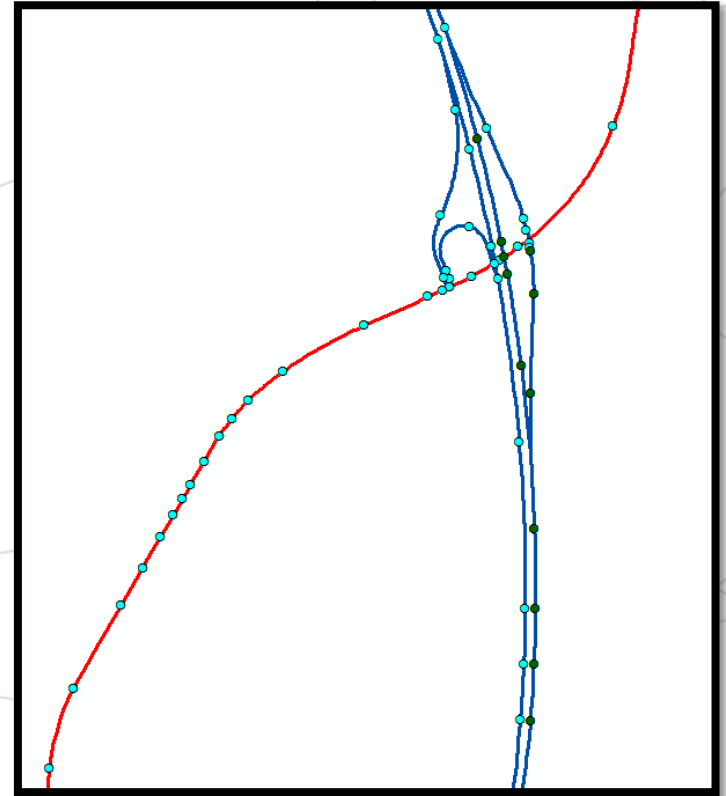
NVDB

HERE

- If combine manually, how do we handle data updates?

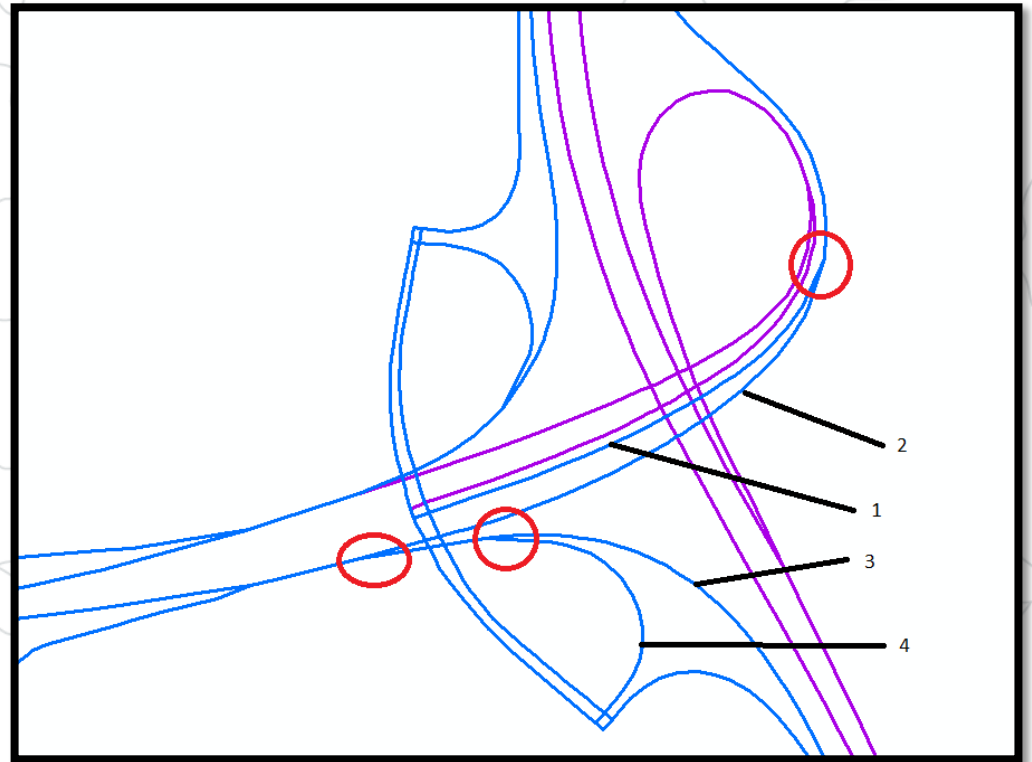
Other problems

- Highway segments drawn as 2 lines, RouteSmart sees it as 2 separate roads and plow them by different vehicles.



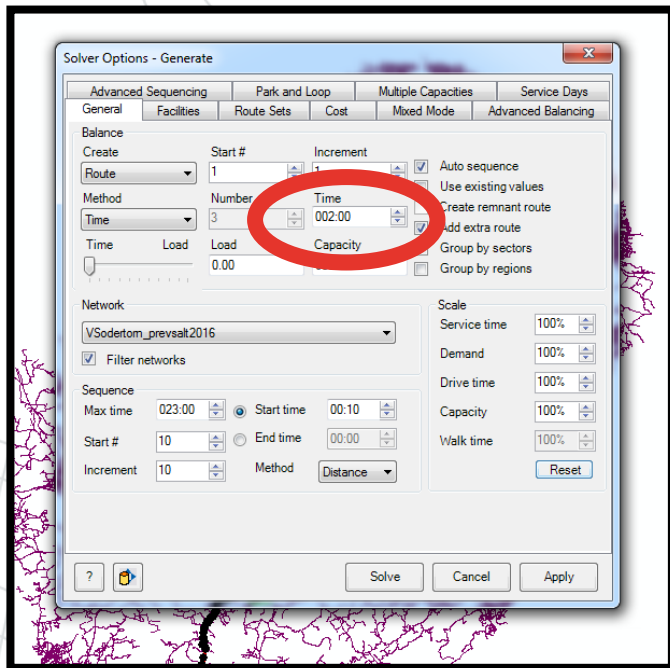
Other problems

- Moving snow from left to right
- RouteSmart serve these sections randomly



Other problems

- Entries and exits cant be generated by time in RouteSmart
- Target time 2h can easily be 4-5 hours after sequencing
- If reducing max time, causing unsequenced stops
- Autosequencing not helping



Travel Without Service	Travel While Servicing	Time at End	Total Time	Demand	Distance (Kilometers)
0:00	0:00	0:00	0:00	21.26	0.0
3:29	1:00	0:00	4:29	7.06	246.5

Other problems

- Load/time slider bar causing strange behavior when set as load 0 and positioned one notch from left

Scripts

Autocreate new workspace for 10-20 areas with one click

Status

- Batch file not working
- Cant choose 2 areas for 1 workspace

Calculate demand

Status

- Works but needs alot of manually work since NVDB dont have source information

Map automation

Status

-

Scripts future

Take a note of
SADM table used
for each calculation

Print all settings
used i.e. solution
name, speeds,
network

Script for street
updates

Fusion

- Edit route colors
- Fixed route colors
- See travel path/driving directions
- Test data packages before upload into Fusion





RouteSmart Navigator

- Installation process tricky
- Swedish language
- Software lagging
- Skip-function (automatically start at any point on the route/loop)

Next season 2016-2017



Keep the 13 Navigators



Keep working on a solution with the data NVDB/HERE



Develop more functions in Fusion



X



SVEVIA

Alltid på väg